

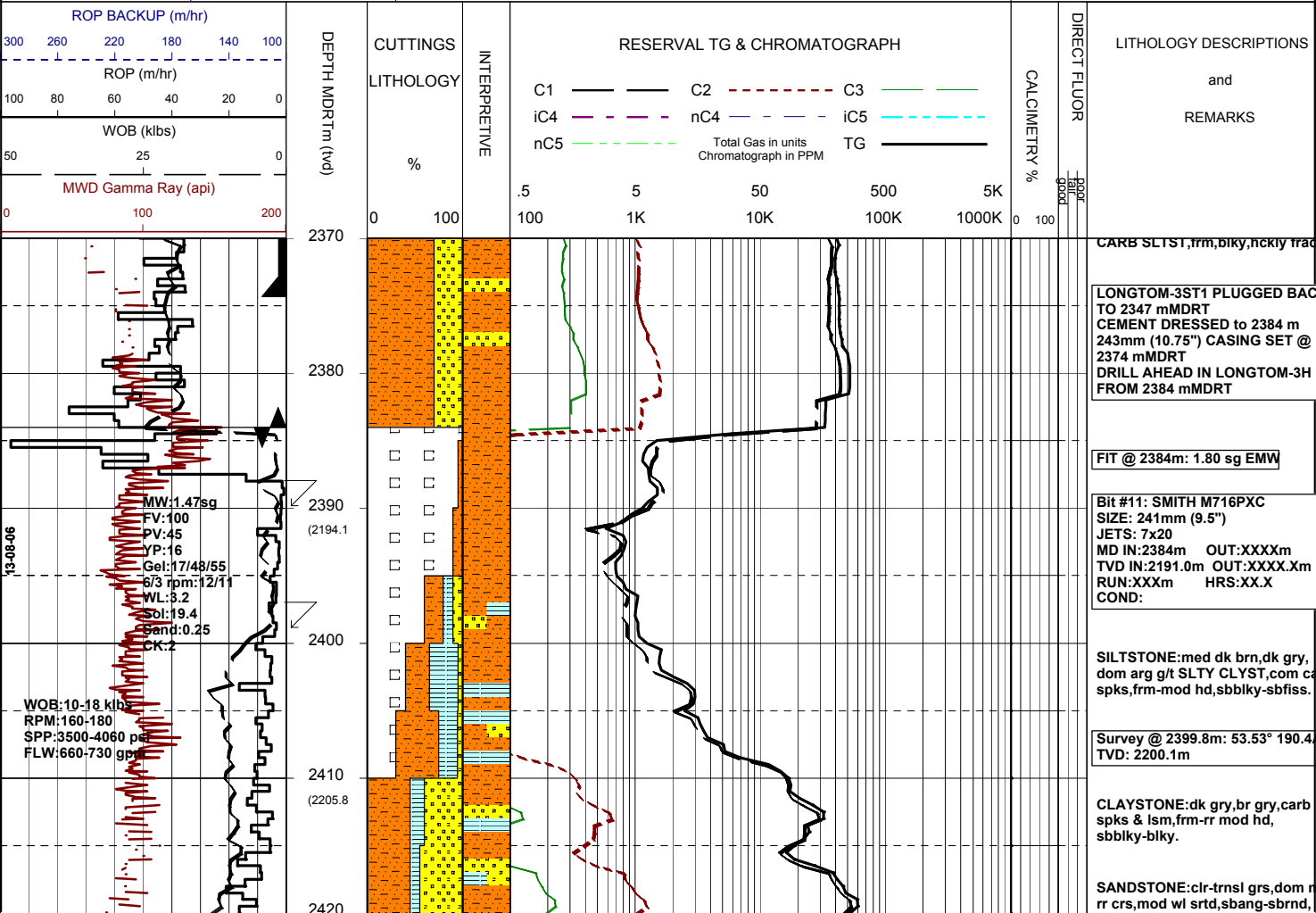


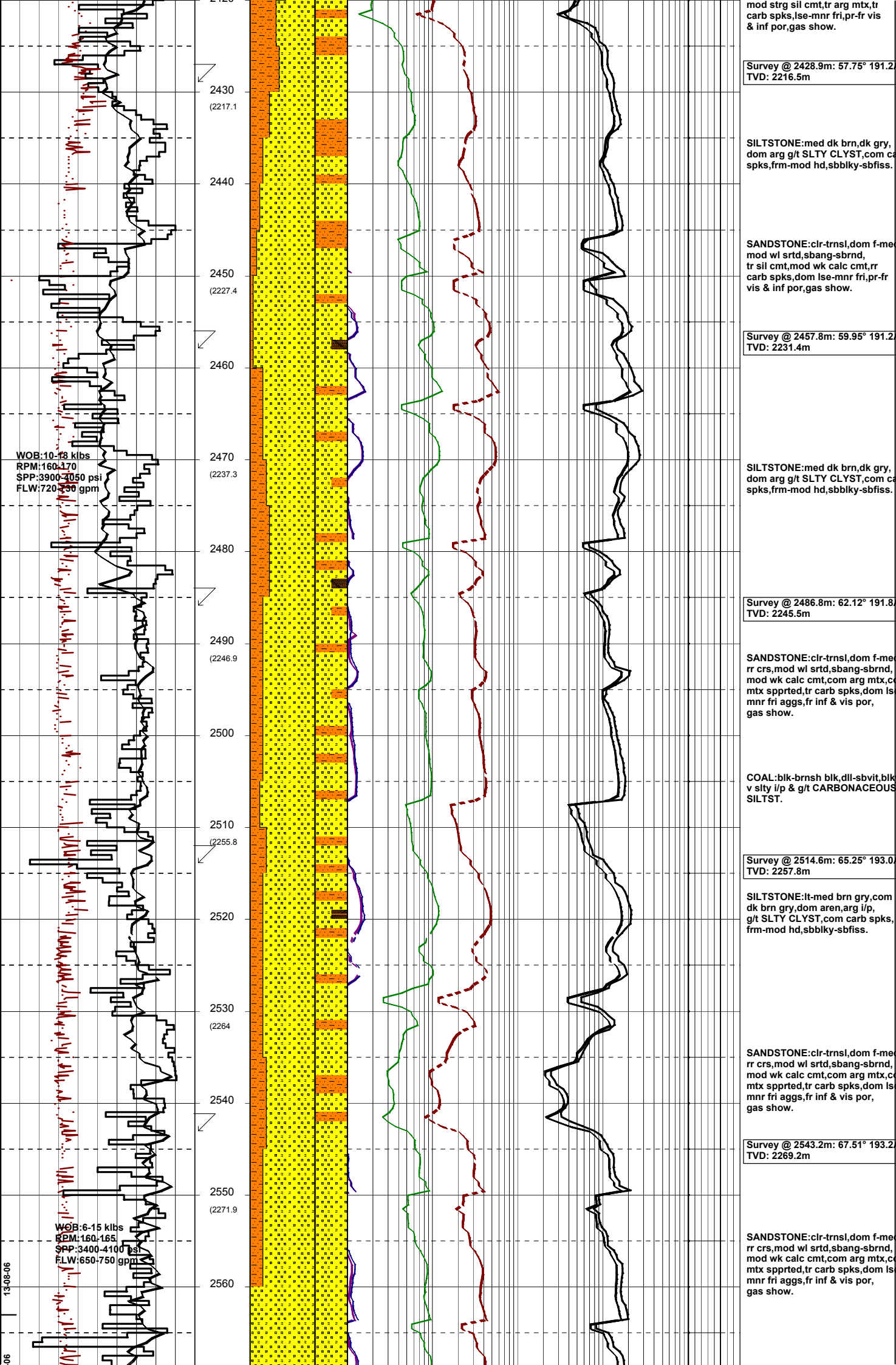
MASTERLOG LONGTOM-3H

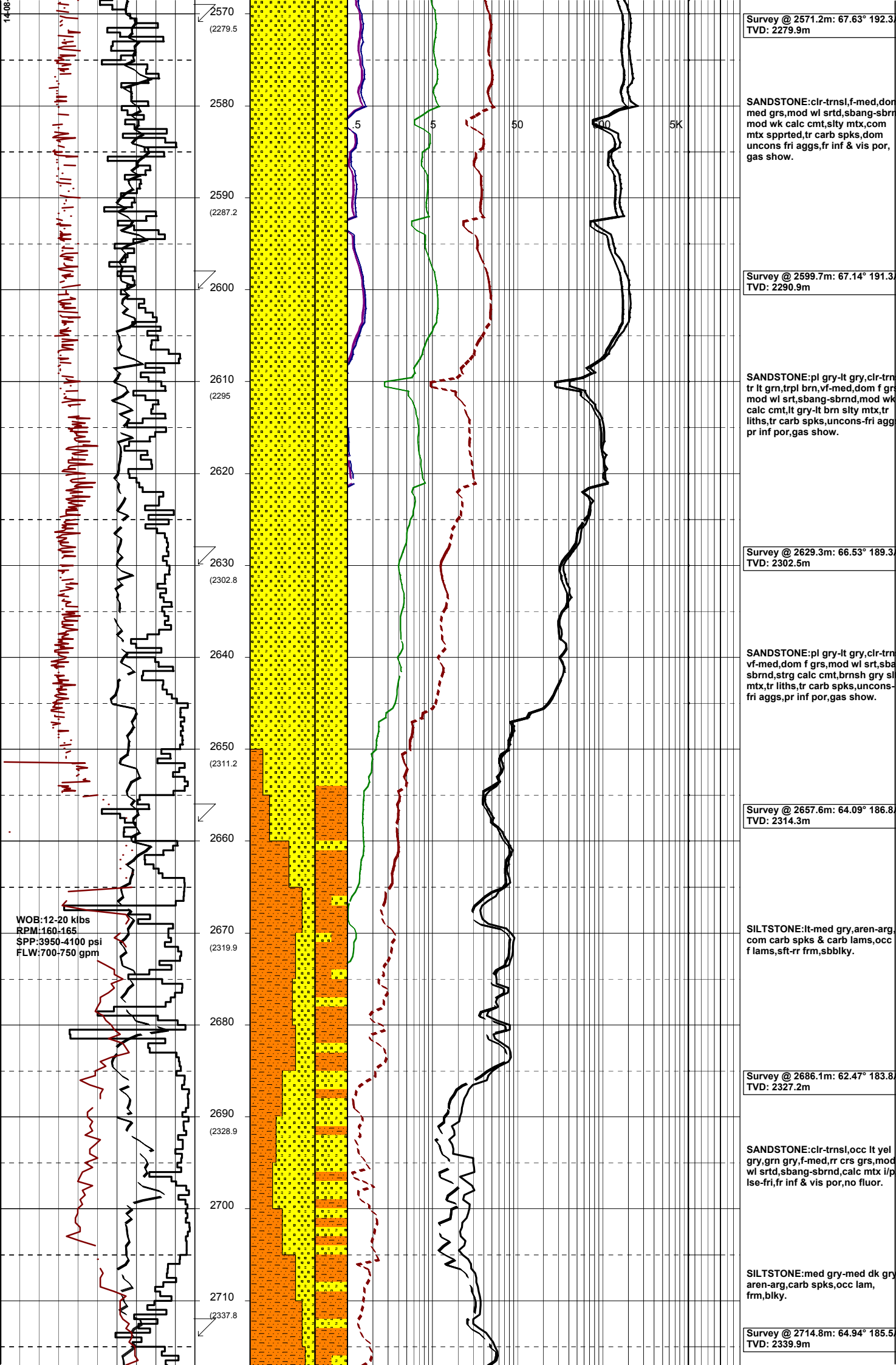


GENERAL	POSITION	HOLE / CASING INFO	DATE / DEPTH	ENGINEERS
Country : AUSTRALIA	Latitude : 38°05'34.63"S	914mm(36") hole to: 111.8m	Spud Date : 02-08-2006	T. N. KYAW
Permit : VIC/P54	Longitude : 148°18'41.52"E	559mm(22") hole to: 1005m	Total Depth Date : XX-XX-2006	A. DUNN
Field : LONGTOM	UTM Co-ord X (m E): 615006	241mm(9 1/2") hole to: m	Total Depth (mMDRT): m	D. ADDERLEY
Basin : GIPPSLAND	UTM Co-ord Y (m N): 5783059.3	762mm(30") Cond. to: 110.8m	True Vertical Depth (mTVDSS): m	P. RADY
Well Type : APPRAISAL	RT to LAT (m): 21.5	406mm(16") Csg. to: 995.32m	Log Scale : 1/ 500	
Rig: OCEAN PATRIOT	RT to Sea Bed (m): 78.2		Final Status : ??	

ABBREVIATIONS	LITHOLOGY LEGEND	ENGINEERING LEGEND
MW Mud Weight FV Funnel Viscosity PV Plastic Viscosity YP Yield Point Gel Gel Strength WL Water Loss KCl Potassium Chloride Cl Chlorides Incl Inclination Az Azimuth WOB Weight on Bit (klbs) RPM Rotations Per Min FLW Flow Rate (gpm) SPP Pump Pressure (psi) RR Re-Run Bit TG Trip Gas CG Connection Gas BG Background Gas DGP Drilled Gas Peak MM Mud Motor	Claystone Siltstone Shale Fine SST Medium SST Coarse SST Marl Clay, Limestone Limestone Dolomite Coal Volcanic Lithic Fragment Foraminifera Fossils Bryozoa Sponges Brachiopoda Cement Glauconite Pyrite Iron Minerals Mica Siderite	Shoe Deviation survey DST TEST Test Sidewall Core Core DOLOMITE RFT FIT Mud loss Mud gain







Survey @ 2571.2m: 67.63° 192.3
TVD: 2279.9m

SANDSTONE:clr-trnsl,f-med,dor
med grs,mod wl srt,shang-sbrn
mod wk calc cmt,slty mtx,com
mtx sppted,tr carb spks,dom
uncons fri aggs,fr inf & vis por,
gas show.

Survey @ 2599.7m: 67.14° 191.3
TVD: 2290.9m

SANDSTONE:pl gry-lt gry,clr-trn
tr lt grn,trpl brn,vf-med,dom f gr
mod wl srt,shang-sbrnd,mod wk
calc cmt,lt gry-lt brn slty mtx,tr
liths,tr carb spks,uncons-fri agg
pr inf por,gas show.

Survey @ 2629.3m: 66.53° 189.3
TVD: 2302.5m

SANDSTONE:pl gry-lt gry,clr-trn
vf-med,dom f grs,mod wl srt,sha
sbrnd,strg calc cmt,brnsh gry sl
mtx,tr liths,tr carb spks,uncons-
fri aggs,pr inf por,gas show.

Survey @ 2657.6m: 64.09° 186.8
TVD: 2314.3m

SILTSTONE:lt-med gry,aren-arg,
com carb spks & carb lams,occ
f lams,sft-rr frm,sbbiky.

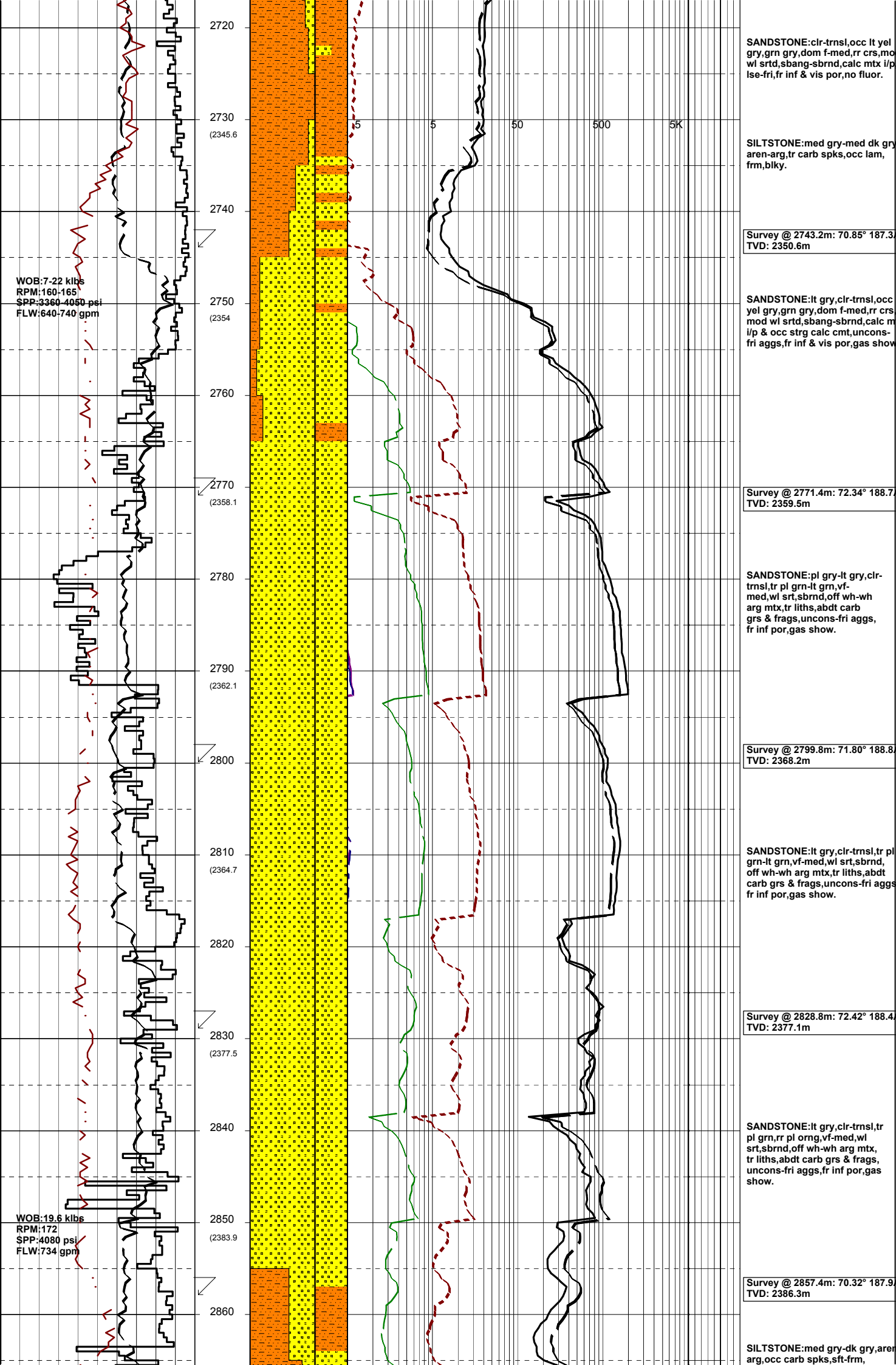
Survey @ 2686.1m: 62.47° 183.8
TVD: 2327.2m

SANDSTONE:clr-trnsl,occ lt yel
gry,grn gry,f-med,rr crs grs,mod
wl srt,shang-sbrnd,calc mtx l/p
lse-fri,fr inf & vis por,no fluor.

SILTSTONE:med gry-med dk gry
aren-arg,carb spks,occ lam,
frm,blky.

Survey @ 2714.8m: 64.94° 185.5
TVD: 2339.9m

WOB:12-20 klbs
RPM:160-165
SPP:3950-4100 psi
FLW:700-750 gpm



WOB: 7-22 klbs
 RPM: 160-165
 SPP: 3360-4050 psi
 FLW: 640-740 gpm

WOB: 19.6 klbs
 RPM: 172
 SPP: 4080 psi
 FLW: 734 gpm

SANDSTONE:clr-trnsl,occ lt yel gry,grn gry,dom f-med,rr crs,mod wl srt,shang-sbrnd,calc mtx i/p lse-fri,fr inf & vis por,no fluor.

SILTSTONE:med gry-med dk gry,aren-arg,tr carb spks,occ lam,frm,blk.

Survey @ 2743.2m: 70.85° 187.3°
 TVD: 2350.6m

SANDSTONE:lt gry,clr-trnsl,occ yel gry,grn gry,dom f-med,rr crs mod wl srt,shang-sbrnd,calc m i/p & occ strg calc cmt,uncons-fri aggs,fr inf & vis por,gas show

Survey @ 2771.4m: 72.34° 188.7°
 TVD: 2359.5m

SANDSTONE:pl gry-lt gry,clr-trnsl,tr pl grn-lt grn,vf-med,wl srt,sbrnd,off wh-wh arg mtx,tr liths,abdt carb grs & frags,uncons-fri aggs, fr inf por,gas show.

Survey @ 2799.8m: 71.80° 188.8°
 TVD: 2368.2m

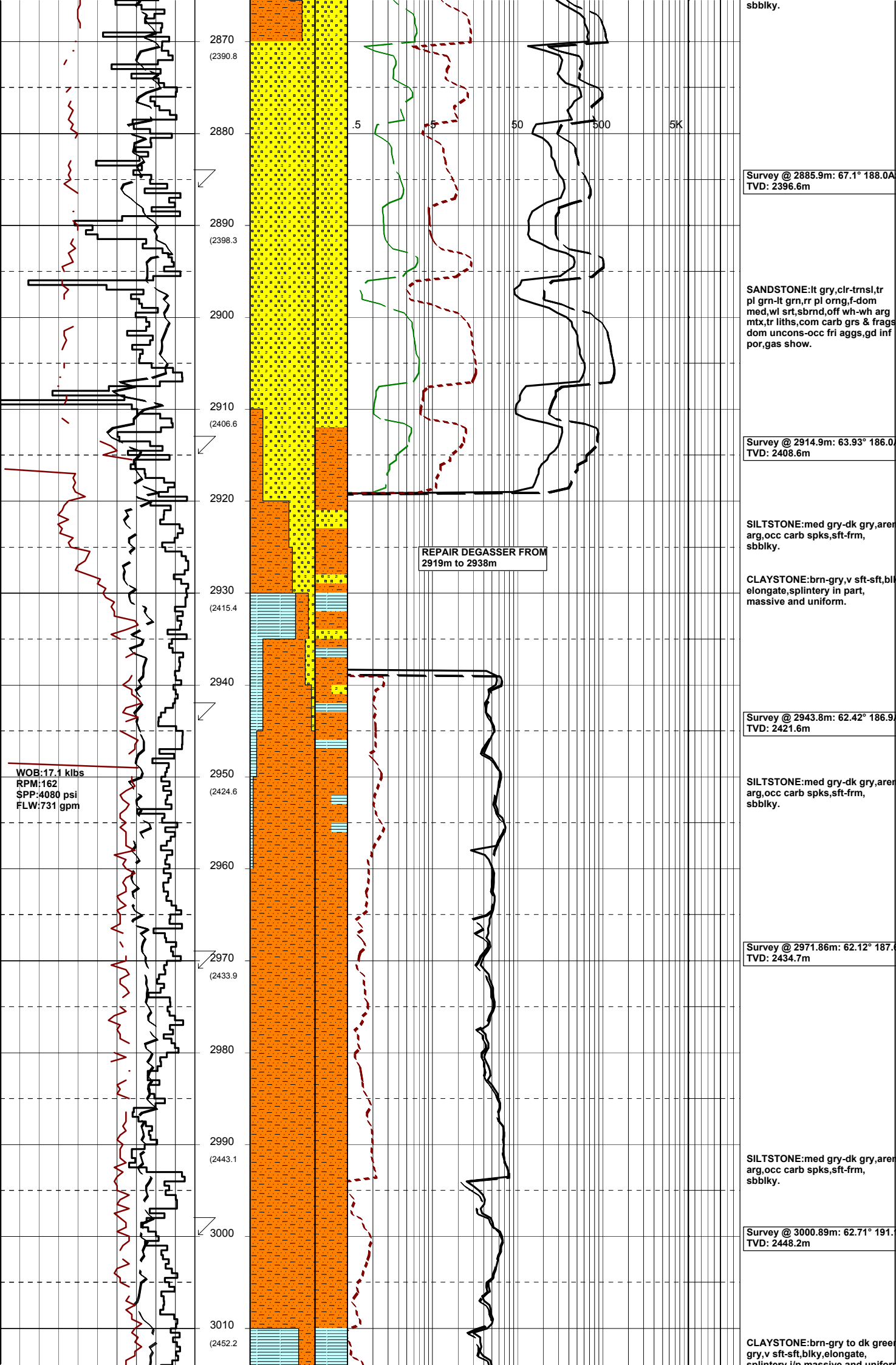
SANDSTONE:lt gry,clr-trnsl,tr pl grn-lt grn,vf-med,wl srt,sbrnd, off wh-wh arg mtx,tr liths,abdt carb grs & frags,uncons-fri aggs fr inf por,gas show.

Survey @ 2828.8m: 72.42° 188.4°
 TVD: 2377.1m

SANDSTONE:lt gry,clr-trnsl,tr pl grn,rr pl org,vf-med,wl srt,sbrnd,off wh-wh arg mtx, tr liths,abdt carb grs & frags, uncons-fri aggs,fr inf por,gas show.

Survey @ 2857.4m: 70.32° 187.9°
 TVD: 2386.3m

SILTSTONE:med gry-dk gry,aren arg,occ carb spks,sft-frm,



sbbiky.

SANDSTONE:lt gry,clr-trnsl,tr
 pl grn-lt grn,rr pl org,f-dom
 med,wl srt,sbrnd,off wh-wh arg
 mtz,tr liths,com carb grs & frags
 dom uncons-occ fri aggs,gd inf
 por,gas show.

SILTSTONE:med gry-dk gry,aren
 arg,occ carb spks,sft-frm,
 sbbiky.

CLAYSTONE:brn-gry,v sft-sft,bl
 elongate,splintery in part,
 massive and uniform.

SILTSTONE:med gry-dk gry,aren
 arg,occ carb spks,sft-frm,
 sbbiky.

SILTSTONE:med gry-dk gry,aren
 arg,occ carb spks,sft-frm,
 sbbiky.

CLAYSTONE:brn-gry to dk green
 gry,v sft-sft,blky,elongate,
 splintery to massive and uniform

spintery i/p, massive and uniform.

CLAYSTONE: brn gry to dk greenish gry, light brn dolomite firm to mod hd, blk, elongate, splintery i/p, massive & uniform.

SANDSTONE: off wh, lt greenish v-sft, aggs vf-f, grading to SLTST md-wl sorted, mod lt brn dolomite, 60% silty mtz, pr inf por.

Survey @ 3029.7m: 64.69° 192.6°
TVD: 2461.0m

SILTSTONE: brnsh gry, sft-sbfrm sbbkly, occ blk, v aren, carb spks com v f sand.

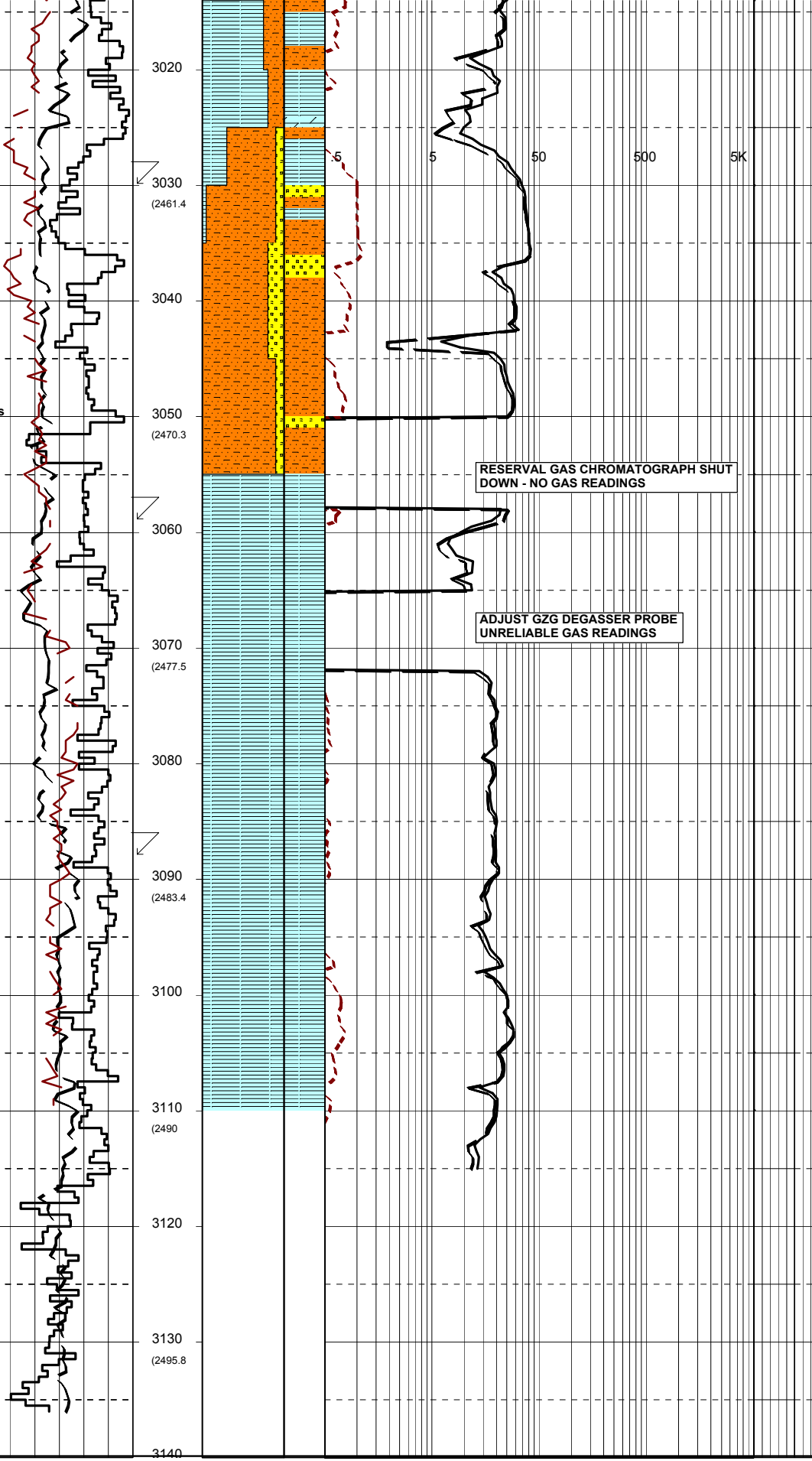
Survey @ 3058.5m: 67.97° 193.5°
TVD: 2472.5m

SILTY CLAYSTONE: olv gry, v sft, sbbkly, rr carb spks, uniform silty i/p.

Survey @ 3087.5m: 70.40° 194.1°
TVD: 2482.8m

SILTY CLAYSTONE: dk gry-olv g arg, v sft-sft, homogenous, amorph.

WOB: 10-15 klbs
RPM: 170
SPP: 4100 psi
FLW: 720 gpm



3020
 3030 (2461.4)
 3040
 3050 (2470.3)
 3060
 3070 (2477.5)
 3080
 3090 (2483.4)
 3100
 3110 (2490)
 3120
 3130 (2495.8)
 3140

RESERVAL GAS CHROMATOGRAPH SHUT DOWN - NO GAS READINGS

ADJUST GZG DEGASSER PROBE UNRELIABLE GAS READINGS